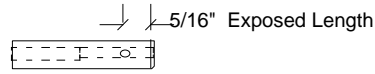


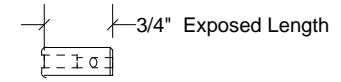
A - 10-32 Slotted or Hex Base Stud (IC-Hex Tip)



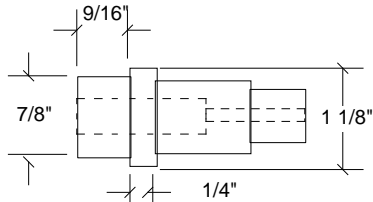
B - Electrode Spring for Plate End Ceramic (IC-Spring)



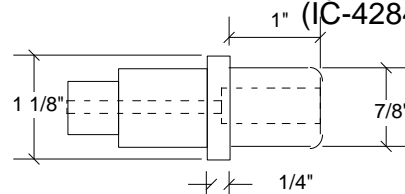
F - Adjustable Conductor Sleeve Use w/ Straight Tip or Dryer Tip (IC-42849-A-1)



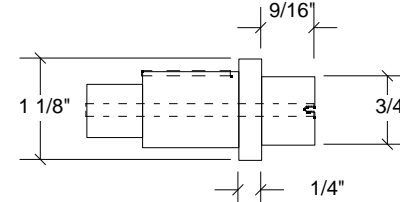
F - Conductor Sleeve 42849-A-6 (Bent Tip) Can also be used for Straight.



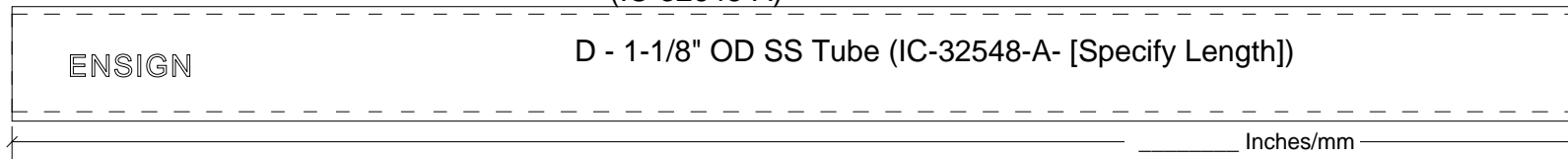
C - Plate End Ceramic (IC-71050-A)



E - Burner End Ceramic Use w/ Straight Tip (IC-32648-A)

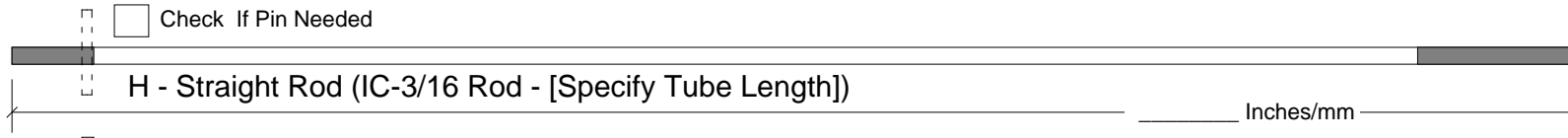


E - Burner End Ceramic Use w/ Bent Tip or Flag Tip (IC-48232-A)

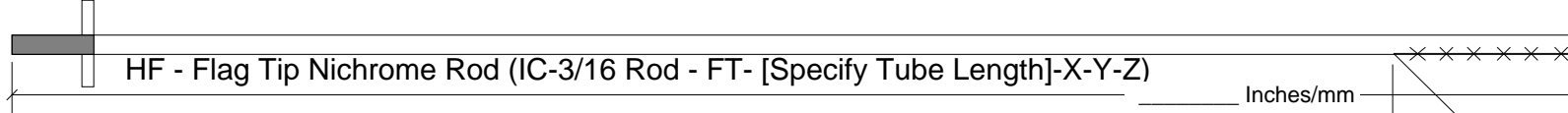


D - 1-1/8" OD SS Tube (IC-32548-A- [Specify Length])

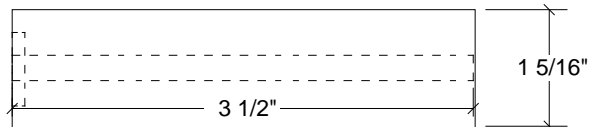
Overall Electrode is 2-3/4" Longer than tube (Not including Tip)



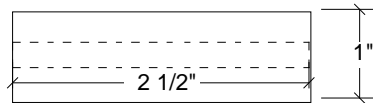
H - Straight Rod (IC-3/16 Rod - [Specify Tube Length])



HF - Flag Tip Nichrome Rod (IC-3/16 Rod - FT- [Specify Tube Length]-X-Y-Z)



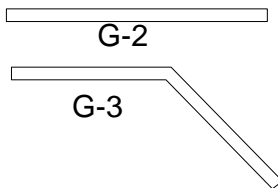
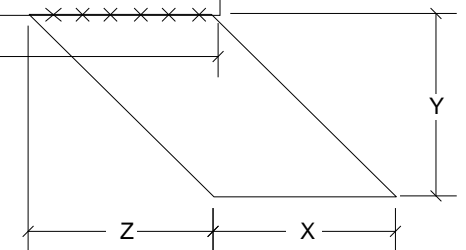
Outside Rear Ceramic (IC-B8524P-4D)



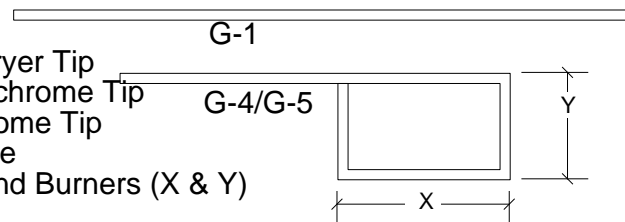
Inside Front Ceramic (IC-B8524P-3C)



Set Collar IC-Collar



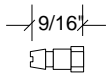
- G - Electrode Tips
- G-1 IC-42849-A-2 1/8" SS Dryer Tip
- G-2 IC-42849-A-3 Straight Nichrome Tip
- G-3 IC-42849-A-4 Bent Nichrome Tip
- G-4 IC-20681 Flag Tip for Pipe
- G-5 IC-42182 Flag Tip for Band Burners (X & Y)



ENSIGN Ribbon Burners Inc.
101 Secor Lane Pelham Manor NY 10803

Electrode Components

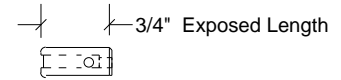
10-9-98



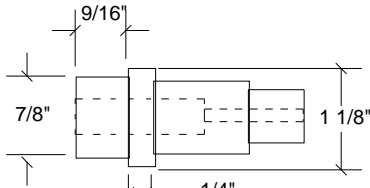
A - 10-32 Slotted
or Hex Base Stud
(IC-Hex Tip)



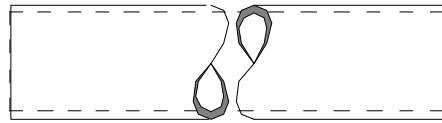
B - Electrode Spring
for Plate End Ceramic
(IC-Spring)



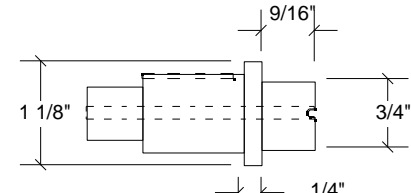
F - Conductor Sleeve
42849-A-6 (Bent Tip)
Can also be used for Straight.



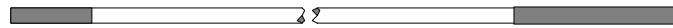
C - Plate End
Ceramic
(IC-71050-A)



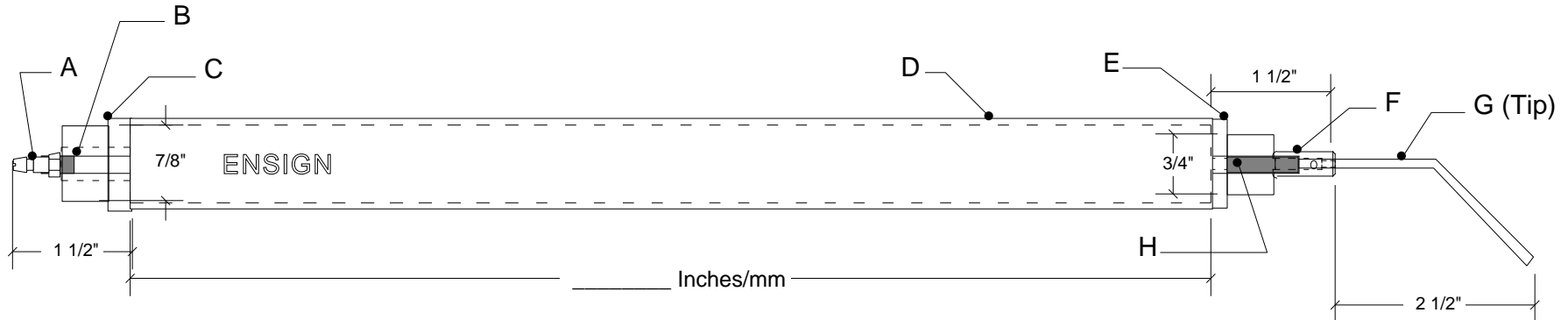
D - 1-1/8" OD SS Tube (IC-32548-A- [Specify Length])



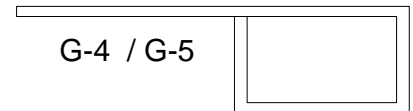
E - Burner End Ceramic
Use w/ Bent Tip or Flag Tip
(IC-48232-A)



H - Straight Rod (IC-3/16 Rod - [Specify Tube Length])



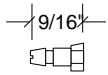
Overall Electrode is 3" Longer than tube (Not including Tip)



G - Electrode Tips

- G-3 IC-42849-A-4 Bent Nichrome Tip
- G-4 IC-20681 Flag Tip for Pipe
- G-5 IC-42182 Flag Tip for Band Burners

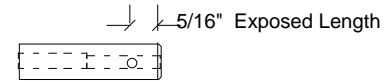
ERB Ensign Ribbon Burners LLC 101 Secor Lane Pelham Manor NY 10803
Bent Tip Electrode Assembly
11-23-98



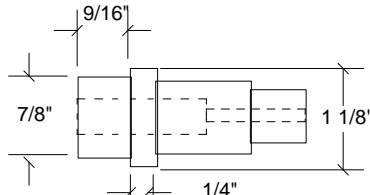
A - 10-32 Slotted or Hex Base Stud (IC-Hex Tip)



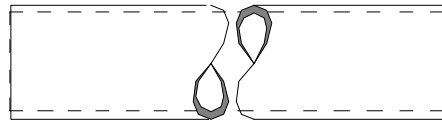
B - Electrode Spring for Plate End Ceramic (IC-Spring)



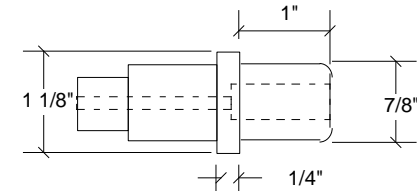
F - Adjustable Conductor Sleeve Use w/ Straight Tip or Dryer Tip (IC-42849-A-1)



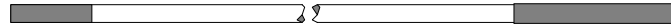
C - Plate End Ceramic (IC-71050-A)



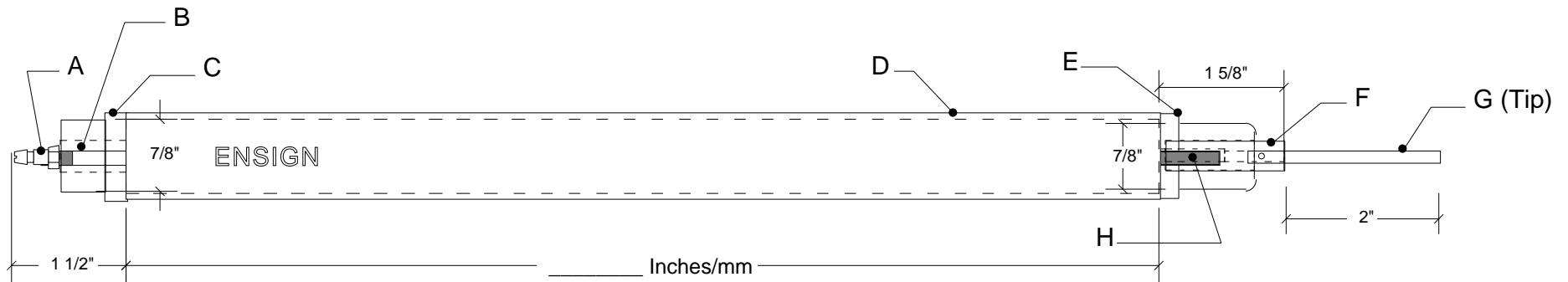
D - 1-1/8" OD SS Tube (IC-32548-A- [Specify Length])




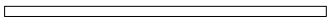

E - Burner End Ceramic Use w/ Straight Tip (IC-32648-A)



H - Straight Rod (IC-3/16 Rod - [Specify Tube Length])



Overall Electrode is 3-1/8" Longer than tube (Not including Tip)

-  G-2 IC-42849-A-3 2" Straight Nichrome Tip
-  G-2 IC-42849-A-3a 2-1/2" Straight Nichrome Tip
-  G-2 IC-42849-A-3b 2-1/2" Straight Nichrome Tip

ERB Ensign Ribbon Burners LLC 101 Secor Lane Pelham Manor NY 10803
Straight Tip Electrode Assembly
11-23-98